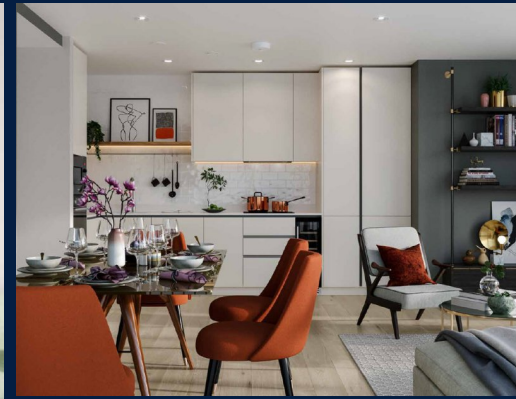


# FOR SALE

## RESIDENTIAL - APARTMENT 1,288SQFT (120SQM) / CALL FOR PRICE!

+65 9763 3816



Affinity Tower : 3 - Bedroom

### TYPE THREE BEDROOM

1187 sqft | 110 sqm

#311, #316, #320, #332

#330, #340, #363, #361

#300, #377, #380, #393

#300, #377, #380, #393

#300, #377, #380, #393

#300, #377, #380, #393

#300, #377, #380, #393

#300, #377, #380, #393

#300, #377, #380, #393

#300, #377, #380, #393

#300, #377, #380, #393

#300, #377, #380, #393

#300, #377, #380, #393

#300, #377, #380, #393

#300, #377, #380, #393

#300, #377, #380, #393

#300, #377, #380, #393

#300, #377, #380, #393

#300, #377, #380, #393

#300, #377, #380, #393

#300, #377, #380, #393

#300, #377, #380, #393

#300, #377, #380, #393

#300, #377, #380, #393

#300, #377, #380, #393

#300, #377, #380, #393

#300, #377, #380, #393

#300, #377, #380, #393

#300, #377, #380, #393

#300, #377, #380, #393

#300, #377, #380, #393

#300, #377, #380, #393

#300, #377, #380, #393

#300, #377, #380, #393

#300, #377, #380, #393

#300, #377, #380, #393

#300, #377, #380, #393

#300, #377, #380, #393

#300, #377, #380, #393

#300, #377, #380, #393

#300, #377, #380, #393

#300, #377, #380, #393

#300, #377, #380, #393

#300, #377, #380, #393

#300, #377, #380, #393

#300, #377, #380, #393

#300, #377, #380, #393

#300, #377, #380, #393

#300, #377, #380, #393

#300, #377, #380, #393

#300, #377, #380, #393

#300, #377, #380, #393

#300, #377, #380, #393

#300, #377, #380, #393

#300, #377, #380, #393

#300, #377, #380, #393

#300, #377, #380, #393

#300, #377, #380, #393

#300, #377, #380, #393

#300, #377, #380, #393

#300, #377, #380, #393

#300, #377, #380, #393

#300, #377, #380, #393

#300, #377, #380, #393

#300, #377, #380, #393

#300, #377, #380, #393

#300, #377, #380, #393

#300, #377, #380, #393

#300, #377, #380, #393

#300, #377, #380, #393

#300, #377, #380, #393

#300, #377, #380, #393

## RESIDENTIAL - APARTMENT

WEST LONDON, HA0 1NW, LONDON, LONDON,  
UNITED KINGDOM

- LISTING ID: SGLD84864192
- TENURE: LEASEHOLD 999
- TITLE: N/A
- SIZE BUILT-UP: 1,288SQFT (120SQM)
- SIZE LAND: N/A
- NO. OF FLOORS: 13
- FLOOR/LEVEL: N/A - LOW FLOOR
- BED ROOMS: 3
- BATH ROOMS: 3
- MAIDS ROOMS: N/A
- PARKING SPACES: N/A
- LAYOUT TYPE: CORNER
- FACING: N/A
- VIEWING: OTHER
- SELLING PRICE: **CALL FOR PRICE!**
- COMPLETION YEAR: 2023
- CONDITION: ORIGINAL CONDITION
- FURNISHING: PARTIALLY FURNISHED
- LISTING DATE: APR 13, 2020

## GRAND UNION

Spacious 1,288sqft (120sqm), partially furnished, 3 bedroom, 3 bathroom Apartment for Sale. Completion in 2023, this low floor corner unit is in original condition. Others: Leasehold 999. This property is currently vacant and ready to move in. Location: London, United Kingdom.

### INTERIOR FACILITIES

- Balcony
- Cable TV

### OTHER INTERIOR FEATURES

- Cooker Hob/Hood
- Dishwasher
- Fridge
- Intercom

### EXTERIOR FACILITIES

- 24 Hours Security
- Cafe
- Function Room
- Landscaped Garden

VISIT THIS PROPERTY AT: <https://www.sglivingspaces.com/property/SGLD84864192>

## SERENE TAN - HUTTONS ASIA PTE LTD

3 Bishan Place #05-01 CPF Bishan Building  
D20, 579838, Singapore

+65 9763 3816  
WhatsApp Me

serenetan0204@gmail.com

<https://www.sglivingspaces.com>



Scan QR Code

**Huttons** Call for Viewing  
The Agency of Choice +65-97633816